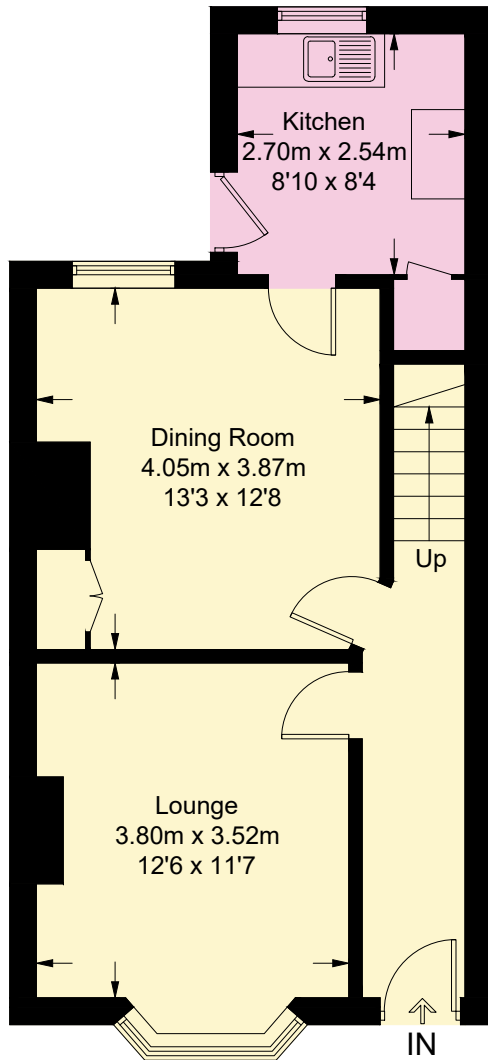


31 Park Road, Colwyn Bay, LL29 7UG

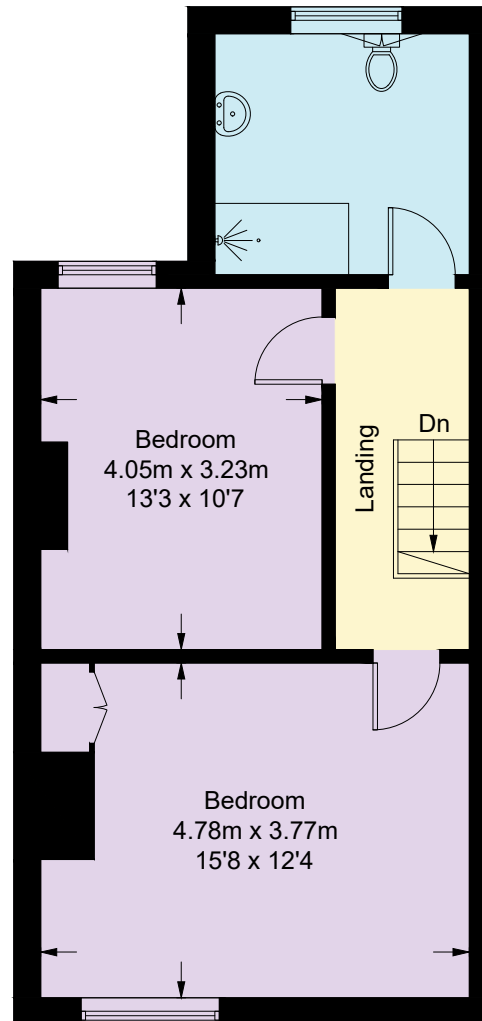
Approximate Gross Internal Area = 92.6 sq m / 997 sq ft

Storage = 9.3 sq m / 100 sq ft

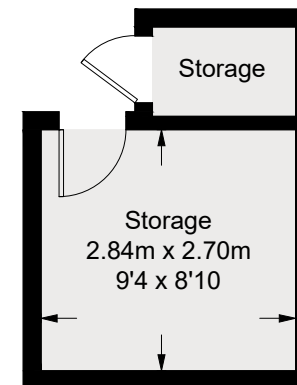
Total = 101.9 sq m / 1097 sq ft



Ground Floor



First Floor



(Not Shown In Actual
Location / Orientation)

This plan is for layout guidance only. Not drawn to scale unless stated. Windows and door openings are approximate. Whilst every care is taken in the preparation of this plan, please check all dimensions, shapes and compass bearings before making any decisions reliant upon them.

Fourlabs.co © 2025 (ID1261866)